

# TOMCO Pneumatic SLIDE VALVES

**Working Range:**

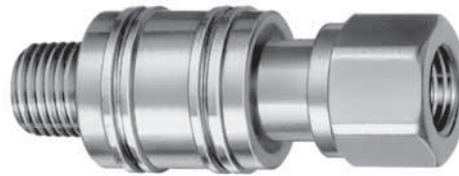
Maximum Operating Pressure;  
To 200 psig

**Temperature:** -20° to +200° F

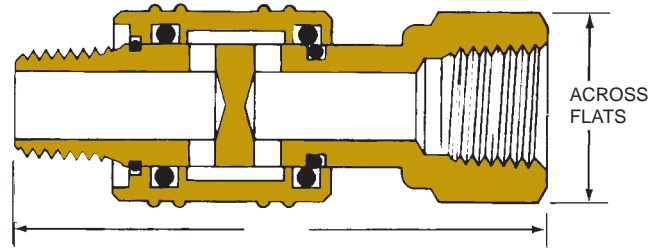
TOMCO 2 position, 3 way, manually operated slide valves provide simple on/off airflow control. They are the ideal, low-cost method for operating single action air cylinders, air clamps, air gauges and similar air-actuated devices. They can be mounted horizontally, vertically or at an angle.

Sliding the operating sleeve to the ON position closes the valve's relief ports and permits air to flow through the circuit. Sliding the sleeve in the opposite direction, opens the ports to bleed the air-operated device and shuts off the airflow. The slide protects the exhaust ports and directs exhaust air away from the operator's hand.

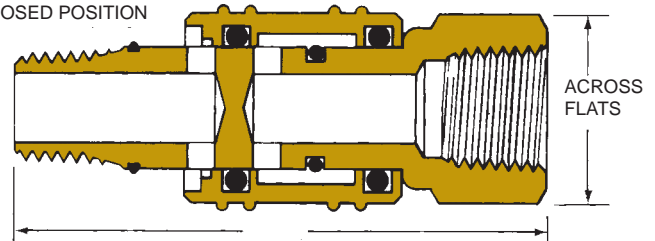
TOMCO slide valves are available with or without a detent which holds the sleeve in the open position against accidental closing due to vibration or gravitational pull.



OPEN POSITION



CLOSED POSITION



**MALE THREAD**

	With Detent	Without Detent	O.A.L.	Hex Across Flats	Flow @ 100 psig inlet	
					Pressure drop	Delivered volume
1/8" NPTF	S1	S1LD	2.150"	9/16"	5 psig	19 scfm
1/4" NPTF	S2	S2LD	2.440"	3/4"	5 psig	32 scfm

# TOMCO CHECK VALVES

**Working Range:**

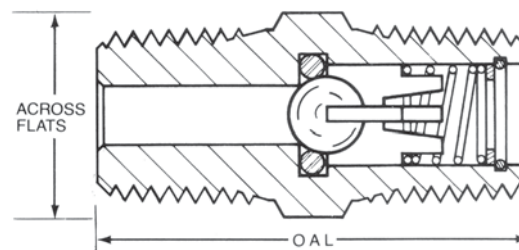
Maximum Operating Pressure;  
To 1000 psig

**Temperature:** -40° to +230° F

**Cracking Pressure:** 1-2.5 psi

Available with elastomeric O-ring (Buna N\*) for gas-tight seal or metal-to-metal leak-tight liquid seat. Brass body, stainless steel ball and spring, acetal ball guide.

\* Other O-ring materials available. Please consult factory.



**MALE THREAD**

	Cv	O-Ring Seat	Metal-to-Metal Seat	O.A.L.	Hex Across Flats	Maximum Recommended Flow (gpm)
1/4" NPTF	.60	1900D-15	1901D-15	1.375"	9/16"	2.5
3/8" NPTF	1.00	1930D-20	1931D-20	1.625"	3/4"	6.0
1/2" NPTF	2.00	1940D-25	1941D-25	2.000"	7/8"	10.0